

# BioEntry P2

COMPACT IP FINGERPRINT DEVICE



## BioEntry P2

Suprema BioEntry P2 is a compact fingerprint access control device featuring Suprema's next generation biometric technology and security platform. BioEntry P2 provides class-leading performance and security by featuring Suprema's latest fingerprint algorithm coupled with powerful 1.0GHz CPU. Packed in a million-type sleek design, BioEntry P2 also provides added flexibility in system design by featuring multi card reading with dual-frequency RFID technology. With its selection of communication interfaces and credential options, BioEntry P2 is a perfect IP access control solution for sites large or small.

# BioEntry P2 COMPACT IP FINGERPRINT DEVICE

## Features



- Best-in-class Performance**
- Latest Suprema algorithm
  - Fast matching: Max 10,000 match/sec
  - Powerful 1.0GHz CPU
  - High-precision OP5 optical sensor



- Enterprise-level Capacity**
- Max. 10,000 users
  - Max. 1,000,000 event logs



- Multi RFID Card Reading**
- LF(125kHz), HF(13.56MHz) dual-band
  - Reads all card types including HID multiCLASS (EM/HID Prox/MIFARE/iCLASS/DESFire/FeliCa/NFC)



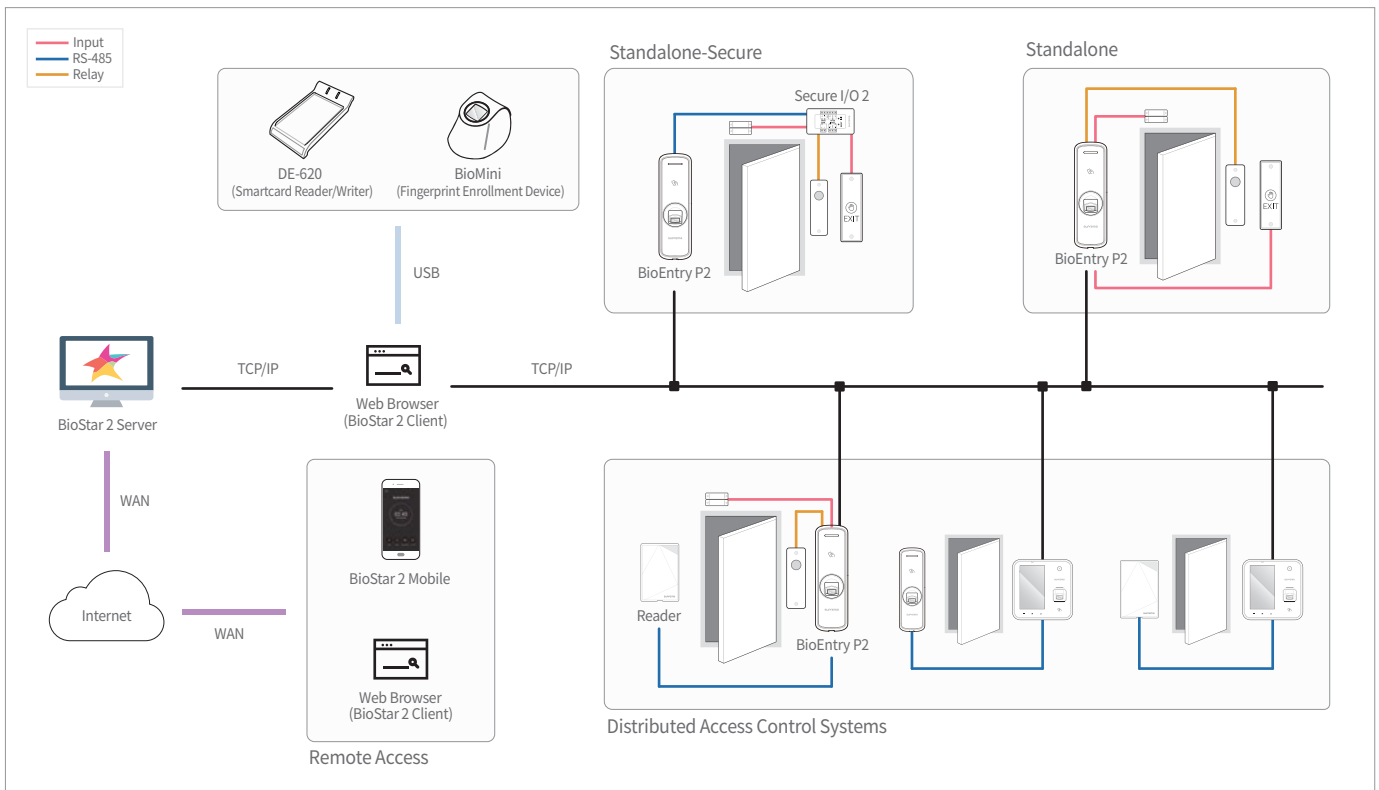
- Versatile Interfaces**
- Communication: TCP/IP, RS-485, Wiegand
  - Input/output: TTL I/O, Relay

## Specifications

Biometric	Fingerprint				
Sensor Type	Optical Sensor (OP5)				
Template	SUPREMA / ISO 19794-2 / ANSI 378				
Extractor / Matcher	MINEX certified and compliant				
RF Option	<table border="1"> <thead> <tr> <th>BEP2-OD</th> <th>BEP2-OA</th> </tr> </thead> <tbody> <tr> <td>125kHz EM &amp; 13.56MHz MIFARE, MIFARE Plus, DESFire/EV1, FeliCa, NFC</td> <td>125kHz EM, HID Prox &amp; 13.56MHz MIFARE, MIFARE Plus, DESFire/EV1, FeliCa, iCLASS SE/SR, NFC</td> </tr> </tbody> </table>	BEP2-OD	BEP2-OA	125kHz EM & 13.56MHz MIFARE, MIFARE Plus, DESFire/EV1, FeliCa, NFC	125kHz EM, HID Prox & 13.56MHz MIFARE, MIFARE Plus, DESFire/EV1, FeliCa, iCLASS SE/SR, NFC
BEP2-OD	BEP2-OA				
125kHz EM & 13.56MHz MIFARE, MIFARE Plus, DESFire/EV1, FeliCa, NFC	125kHz EM, HID Prox & 13.56MHz MIFARE, MIFARE Plus, DESFire/EV1, FeliCa, iCLASS SE/SR, NFC				
CPU	1.0 GHz				
Memory	8GB Flash + 64 MB RAM				
Max. User	10,000(1:1), 10,000(1:N)				
Max. Template	20,000(1:1), 20,000(1:N)*				
Max. Logs	1,000,000(text)				
LED	Multi-Color				
Sound	Multi-tone Buzzer				
Ethernet	10/100 Mbps, auto MDI/MDI-X				
RS-485	1ch Host or Slave (Selectable)				
Wiegand	1ch Input or Output (Selectable)				
TTL	2ch Input				
Relay	1 Relay				
Tamper	Supported				
Power	DC 12V				
Dimensions (WxHxD, mm)	50 x 164 x 37.5				
Certificates	CE, FCC, KC, RoHS, REACH, WEEE				

\* Two templates per finger

## System Configurations



### Suprema Inc.

16F Parkview Tower, 248, Jeongjail-ro, Bundang-gu, Seongnam-si, Gyeonggi-do, 13554, Rep. of KOREA  
 Tel: +82 31 783 4502 | Fax: +82 31 783 4503 | Inquiry: sales@supremainc.com

©2017 Suprema Inc. Suprema and identifying product names and numbers herein are registered trade marks of Suprema, Inc. All non-Suprema brands and product names are trademarks or registered trademarks of their respective companies. Product appearance, build status and/or specifications are subject to change without notice.  
 [AHL-BEP2-170927-00-EN]